

Ashbury College Uniform Chart

We recommend that you complete the measurement table below and then work through the sizing chart as a guideline to determine your child's sizing. For a proper fit, measure carefully – keep the tape firm but not tight. Custom orders are available for students who fit outside of the size chart measurements. Note that students are permitted to choose uniform elements appropriate for their gender identity.

Height: Stand with shoes against the wall and measure from the top of the head to the floor

Neck: Measure around the neck

Chest: Measure around the fullest part of the chest

Back: Measure from the nape of the neck (the bone you can feel where the neck meets the shoulders) and measure straight down the spine to where you'd like the clothes to fall

Waist: Measure around the narrowest part of the waist

Hips: Measure around the fullest part of the hips

Inseam: Lay a pair of pants of favourable length on a flat surface and measure along the inseam from the crotch to the bottom of the leg.

My child's measurements (in inches) are:

Height:	
Neck:	
Chest:¹	
Back:²	
Waist:³	
Hips:	
Inseam:⁴	

Notes:

1: This is the most important measurement for the blazer

2: If height is over 5'11" (71 inches), we recommend special ordering a tall blazer by emailing schoolstore@ashbury.ca

3: When measuring around the waist, measure where you would normally wear your pants

4: If inseam is over 35 inches, we recommend ordering tall pants, available on the website

Junior School Green Blazer



Size	8	10	12	14	16	18	20
Chest	31	33	34	35	36	37	38
Hips	32-33	34-35	36-37	37-38	38-39	40-41	41-42
Back	20 ½	22	23 ½	25	26 ½	28	29 ½

Senior School Navy Blazer



Navy Straight-Cut Blazer



Navy Tapered-Cut Blazer



Navy Straight-Cut Blazer

Size	34	36	38	40	42	44	46	48
Chest	33-34	35-36	37-38	39-40	41-42	43-44	45-46	47-48
Hips	35-36	37-38	39-40	41-42	43-44	45-46	47-48	49-50
Back	30	30 ¼	30 ½	30 ¾	31	31 ¼	31 ½	31 ¾

*If height is over 5'11" (71 inches), we recommend special ordering a tall blazer by emailing schoolstore@ashbury.ca

Navy Tapered-Cut Blazer

Size	2	4	6	8	10	12	14	16	18	20
Chest	30-31	32-33	33-34	35-36	36-37	38-39	40-41	42-43	44-45	46-47
Hips	31-32	33-34	35-36	37-38	39-40	41-42	43-44	45-46	47-48	49-50
Back	24 ½	25 ¼	26	26 ¼	27 ½	27 ¾	28 ¼	28 ½	29	29 ¼

Junior School Pants



Half Elastic Waist Pant



No Elastic Waist Pant

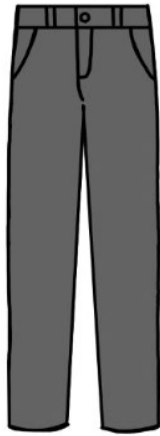
Half Elastic Waist Pant

Size	6	8	10	12	14	16	18	20
Waist	20 ½	21 ½	22 ½	23 ½	24 ½	25 ½	26 ½	28 ½
Hips	26-27	28-29	29-30	30-31	31-32	32-33	33-34	35-36
Inseam	21	23	25	27	28	29	30	30

No Elastic Waist Pant

Size	12	14	16	18	20
Waist	26 ½	27 ½	28 ½	29 ½	30 ½
Hips	30-31	31-32	32-33	33-34	35-36
Inseam	30 ½	31 ½	32 ½	33 ½	34 ½

Senior School Pants



Regular Fit



Slim Fit



Pleated Front



Tapered Fit

Regular Fit Pant

[illegible]

***If your inseam is greater than 35 inches, we recommend ordering the tall version of your pant size**

Slim Fit Pant

Size	28	30	32	34	36	38	40
Waist	27-28	29-30	31-32	32-34	35-36	37-38	39-40
Hips	31-32	33-34	35-36	37-38	39-40	41-42	43-44
Inseam	35	35	35	35	35	35	35

***If your inseam is greater than 35 inches, we recommend ordering the tall version of your pant size**

Pleated Front Pant

[illegible]

[illegible]

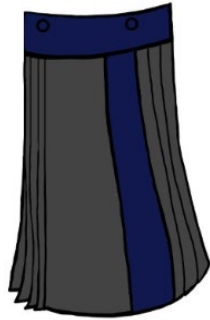
A green and blue plaid kilt.

Tartan Kilt – 18' length

Size	6	8	10	12	14	16	18	20
Waist	20-21	22-23	23-24	24-25	25-26	26-27	27-28	28-29
Hips	23-24	25-26	26-27	28-29	29-30	30-31	31-32	32-33
Length	16	18	18	19 ½	19 ½	19 ½	19 ½	19 ½

[illegible]

Senior School Grey Kilt



Grey Kilt

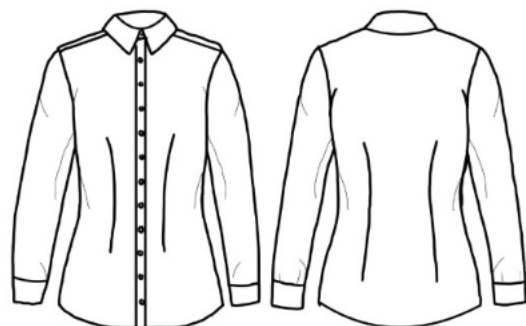
Grey Kilt – 20' and 22' length

Size	4	6	8	10	12	14	16	18	20
Waist	23-24	25-25	27-28	29-30	31-32	33-34	35-36	37-38	39-40
Hips	30-31	32-33	34-35	36-37	38-39	40-41	42-43	44-45	46-47
Length	20/22	20/22	20/22	20/22	20/22	20/22	20/22	20/22	20/22

Junior and Senior School Oxford Shirts



Straight-Cut Oxford Shirt



Tapered-Cut Oxford Shirt

Junior Sizing Straight-Cut Oxford Shirt – Long sleeve and short sleeve

Size	6	8	10	12	14	16	18
Chest	25	30-31	32-33	34-35	36-37	38-39	39-40
Neck	12	12 ½	13	13 ½	14	14 ½	15
Sleeve length	22 ¼	25 ¾	26 ¾	29	30 ½	31 ¼	32 ¼

Junior Sizing Tapered-Cut Oxford Shirt – Long sleeve and short sleeve

Size	S	M	L	XL
Chest	24-25	26-27	28-29	30-31
Sleeve Length	25	27 ½	29 ½	30 ½

Senior Sizing Straight-Cut Oxford Shirt – Long sleeve and short sleeve

Size	S	M	L	XL	XXL
Chest	33-35	36-39	40-43	44-47	48-51
Neck	15	16	17	18	19
Sleeve length	35	35 ¼	35 ½	35 ¾	36

Senior Sizing Tapered-Cut Oxford Shirt – Long sleeve and short sleeve

Size	XS	S	M	L	XL
Chest	32-33	34-35	36-37	38-39	40-41
Sleeve length	31	31 ½	32	32 ½	33

Junior School Polo Shirt**Green Polo****Green Polo**

Size	JS	JM	JL	JXL	AXS	AS	AM	AL	AXL	AXXL
Chest	26-28	28-30	30-32	32-34	35-36	37-38	39-40	38-39	40-41	42-43

Senior School Polo Shirts



Straight-Cut Navy Polo



Tapered-Cut Navy Polo

Straight-Cut Navy Polo

Size	JM	JL	JXL	XS	S	M	L	XL	XXL
Chest	28-30	30-32	32-34	35-36	37-38	39-40	41-42	43-44	45-46

Tapered-Cut Navy Polo

Size	JXL	XS	S	M	L	XL	XXL
Chest	30-31	32-33	34-35	36-37	38-39	40-41	42-43

Junior School Sweaters, Vests, and Cardigans



Green Sweater



Green Vest



Green Cardigan

Green Vest

Size	JS	JM	JL	JXL	AXS	AS	AM	AL	AXL
Chest	27-28	29-30	31-32	33-34	34-35	36-38	39-41	42-44	45-47
Back	19	21	22	23	23 ½	25	27	28	29

Green Sweater & Cardigan

Size	JS	JM	JL	JXL	AXS	AS	AM	AL
Chest	29-30	31-32	33-34	35-36	36-37	38-39	40-42	43-45
Back	20	22	23	24	25	26 ½	28	29

Senior School Sweaters, Vests, and Cardigans



Navy Sweater



Navy Vest



Navy Cardigan

Navy Vest

Size	JL	JXL	AXS	AS	AM	AL	AXL	AXXL	A3XL	A4XL
Chest	31-32	33-34	34-35	36-38	39-41	42-44	45-47	48-50	51-53	54-55
Back	22	23	23 ½	25	27	28	29	30	31	32

Navy Sweater & Cardigan

Size	JL	JXL	AXS	AS	AM	AL	AXL	AXXL
Chest	33-34	35-36	36-37	38-39	40-42	43-45	46-48	49-51
Back	23	24	25	26 ½	28	29	30	31

Socks and Tights

Navy and Green Knee-High Socks

Size	7-9	9-11
Shoe size (adult)	1-5	6-11

***Navy socks are only available in size 9-11**

Grey and White Crew Socks

Size	8-10	10-13	13+
Shoe size (adult)	1-6	10-13	13+

Navy and Green Thin Tights

Size	Height (in)	Weight (lbs)
Youth (S-M)	43-48	50-75
Youth (L-XL)	48-58	75-90
Adult (S-M)	58-63	90-125
Adult (L-XL)	63-68	125-150

Navy and Green Thick Tights

Size	Height (in)	Weight (lbs)
Youth (8-10)	48-57	60-75
Youth (10-12)	52-60	70-85
Youth (12-14)	56-62	80-100
Adult (S)	59-64	95-115
Adult (M)	62-67	115-135
Adult (L)	64-69	135-155
Adult (XL)	66-71	150-175

Junior and Senior Phys. Ed. Uniform



Ashbury Shirt



Youth Shorts



Tapered-Cut Shorts



Straight-Cut Shorts



Kukri Track Jacket



Kukri Legging



Kukri Jogging Pant

Burgundy Ashbury Shirt – Long sleeve and Short sleeve

Size	JS	JM	JL	JXL	AS	AM	AL	AXL
Chest	29-30	31-32	33-34	35-36	31-32	33-36	37-40	41-44
Back	22	23 ½	25	26 ½	28	29	30	31

Under Armour Youth Shorts

Size	S	M	L	XL
Waist	24	25-27	28-29	30-33

Kukri Tapered-Cut Shorts

Size	10	12	14	16	18	20
Waist	28	30	32	34	36	38

***The Ashbury School Store is in the process of switching our Phys. Ed. uniform from the brand Kukri to Under Armour. Because of this, we have limited sizing in Kukri. We do carry every size of Under Armour Tapered-Cut shorts.**

Under Armour (UA) Tapered-Cut Shorts

Size	S	M	L	XL
Waist	26-29	29-31	31-33	33-37

Kukri Straight-Cut Shorts

Size	XS	M	L
Waist	30	34	36

***The Ashbury School Store is in the process of switching our Phys. Ed. uniform from the brand Kukri to Under Armour. Because of this, we have limited sizing in Kukri. We do carry every size of Under Armour Straight-Cut shorts.**

Under Armour (UA) Straight-Cut Shorts

Size	S	M	L	XL	XXL	3XL
Waist	29-31	31-33	33-37	37-40	40-45	45-50

Kukri Track Jacket

Size	YS	YM	YL	2XS	XS	S	M	L	XL	2XL
Chest	28-29	30-31	32-33	34	36	38	40	42	44	46
Waist	25-26	26-27	27-28	28	30	32	34	36	38	40

Kukri Leggings

Size	9-10	6	8	10	12	14	16	18	20
Waist	24-25	24	26	28	30	32	34	36	38

Kukri Jogging Pants

Size	7-8	9-10	JM	2XS	XS	S	M	L	XL	2XL
Waist	23-24	24-25	26-27	28	30	32	34	36	38	40